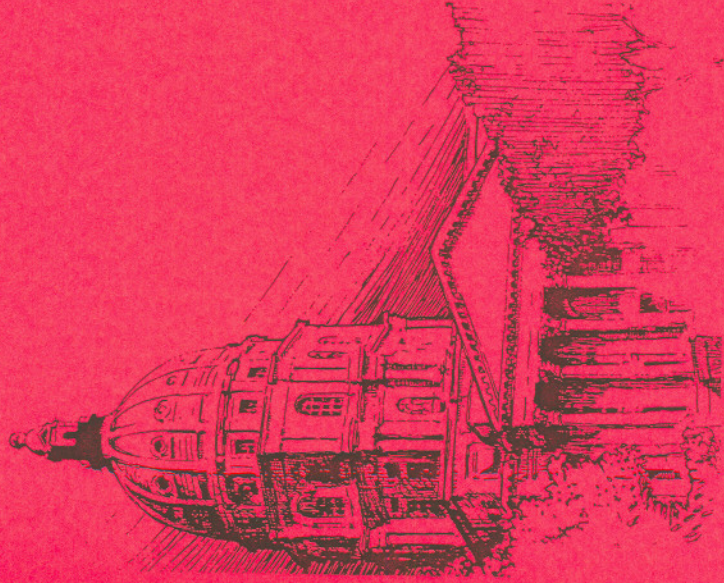


# 1998 KANSAS STATEWIDE ELECTION CYCLE



**Summary of Receipts & Expenditures**

**For The Complete 1998 Statewide  
Election Cycle**

**1-1-95 through 12-31-98**

Kansas Governmental Ethics Commission  
109 West 9th, Suite 504  
Topeka, Kansas 66612  
(785) 296-4219



## **PREFACE**

This campaign statistics summary has been prepared with the objective of increasing the utilization of reported campaign finance information and is intended to:

- (1) Meaningfully condense reported campaign finance information into a published form which is more accessible to the citizens of Kansas;
- (2) Present the candidates' receipts in a manner which allows the reader to assess financial influences on the election process; and allows comparison in financing between candidates;
- (3) Establish a basis for identifying trends in campaign financing by comparing information from year to year.

The information contained in this report is only as valid and as complete as its source--the campaign finance reports filed by the candidates. Handwritten receipts and expenditures reports are at times difficult to read, therefore an error could have been made in deciphering a name or a dollar amount. Obvious reporting errors have been corrected in compiling statistics for this report. However, many errors and omissions are undetectable and are unavoidably reflected in the report. Time and resources did not permit thorough cross-checks with reports filed by all contributing entities.

**1998 CANDIDATES FOR GOVERNOR**

Page	Party	Candidate Last Name	Candidate First Name
1	Rep	Graves	Bill
3	Rfm	King	Darrel
2	Rep	Miller	David
2	Demo	Phelps	Fred
3	Tax	Poovey	Kirt
1	Demo	Sawyer	Tom

**1998 CANDIDATES FOR ATTORNEY GENERAL**

Page	Party	Candidate Last Name	Candidate First Name
4	Demo	Lykins	Dan
5	Demo	Phelps Jr.	Fred
4	Rep	Stovall	Carla

**1998 CANDIDATES FOR COMMISSIONER OF  
INSURANCE**

Page	Party	Candidate Last Name	Candidate First Name
6	Rep	Martinez	Dan
6	Rep	Riley	Bryan
5	Demo	Sebelius	Kathleen

**1998 CANDIDATES FOR SECRETARY OF STATE**

Page	Party	Candidate Last Name	Candidate First Name
8	Tax	Boehr	Sandra
7	Demo	Rezac	Don
8	Lib	Rosile	Steven
7	Rep	Thornburgh	Ron

**1998 CANDIDATES FOR STATE TREASURER**

Page	Party	Candidate Last Name	Candidate First Name
9	Demo	Cline	Rita
9	Rep	Shallenburger	Tim



Candidate: **Graves, Bill**

Party: **Rep** Primary Election: **Won** General Election: **Won**

Current Office: Governor

Office Sought: **Governor**

**MONETARY CONTRIBUTIONS**

**IN-KIND CONTRIBUTIONS**

**EXPENDITURES**

Businesses .....	\$457,153.99	Businesses .....	\$15,154.27	Printing, Postage & Distribution .	\$574,558.00
Individuals ....	2,119,579.84	Individuals .....	\$35,231.66	Newspaper Advertisements .....	\$34,811.00
Out-of-State ...	\$193,425.00	Out-of-State ....	\$2,757.00	Radio & Television Advertising ...	\$865,454.00
PACs .....	\$114,885.00	PACs .....	\$959.66	Yard Signs & Bumper Stickers .....	\$153,612.00
Party .....	\$34,650.00	Party .....	\$0.00	Consultant Services .....	\$151,591.00
Candidate/Spouse	\$0.00	Candidate/Spouse	\$0.00	Reimbursement to Candidate .....	\$39,453.00
Unitemized .....	\$37,143.63	Unitemized .....	\$0.00	Fundraiser .....	\$74,437.00
=====		=====		Miscellaneous .....	\$895,614.00
				=====	
TOTAL CASH ..	\$2,956,837.46	TOTAL IN-KINDS ...	\$54,102.59	TOTAL EXPENDITURES .....	\$2,789,530.00
=====		=====		=====	

Candidate: **Sawyer, Tom**

Party: **Demo** Primary Election: **Won** General Election: **Lost**

Current Office: Representative

Office Sought: **Governor**

**MONETARY CONTRIBUTIONS**

**IN-KIND CONTRIBUTIONS**

**EXPENDITURES**

Businesses .....	\$28,755.31	Businesses .....	\$12,865.08	Printing, Postage & Distribution .	\$19,019.00
Individuals ....	\$80,002.00	Individuals .....	\$2,422.60	Newspaper Advertisements .....	\$1,100.00
Out-of-State ...	\$14,350.00	Out-of-State ....	\$0.00	Radio & Television Advertising ...	\$126,829.00
PACs .....	\$22,597.00	PACs .....	\$0.00	Yard Signs & Bumper Stickers .....	\$3,745.00
Party .....	\$76,400.00	Party .....	\$1,959.88	Consultant Services .....	\$0.00
Candidate/Spouse	\$1,200.00	Candidate/Spouse	\$2,700.00	Reimbursement to Candidate .....	\$987.00
Unitemized .....	\$1,267.98	Unitemized .....	\$0.00	Fundraiser .....	\$1,572.00
=====		=====		Miscellaneous .....	\$65,877.00
				=====	
TOTAL CASH ..	\$224,572.29	TOTAL IN-KINDS ...	\$19,947.56	TOTAL EXPENDITURES .....	\$219,129.00
=====		=====		=====	

Candidate: **Miller, David**

Party: **Rep** Primary Election: **Lost** General Election: **N/A**

Current Office: **N/A**

Office Sought: **Governor**

MONETARY CONTRIBUTIONS		IN-KIND CONTRIBUTIONS		EXPENDITURES	
Businesses .....	\$55,644.50	Businesses .....	\$10,302.55	Printing, Postage & Distribution .	\$124,562.00
Individuals ....	\$272,647.30	Individuals .....	\$10,747.88	Newspaper Advertisements .....	\$2,348.00
Out-of-State ...	\$5,235.00	Out-of-State ....	\$0.00	Radio & Television Advertising ...	\$92,366.00
PACs .....	\$1,075.00	PACs .....	\$3,906.28	Yard Signs & Bumper Stickers .....	\$50,913.00
Party .....	\$0.00	Party .....	\$0.00	Consultant Services .....	\$0.00
Candidate/Spouse	\$16,496.92	Candidate/Spouse	\$2,253.35	Reimbursement to Candidate .....	\$2,459.00
Unitemized .....	\$68,042.32	Unitemized .....	\$207.73	Fundraiser .....	\$16,617.00
=====		=====		Miscellaneous .....	\$128,547.00
				=====	
TOTAL CASH ..	\$419,141.04	TOTAL IN-KINDS ...	\$27,417.79	TOTAL EXPENDITURES .....	\$417,812.00
=====		=====		=====	

Candidate: **Phelps, Fred**

Party: **Demo** Primary Election: **Lost** General Election: **N/A**

Current Office: **N/A**

Office Sought: **Governor**

Affidavit of Exemption on File report not required

MONETARY CONTRIBUTIONS		IN-KIND CONTRIBUTIONS		EXPENDITURES	
Businesses .....	\$0.00	Businesses .....	\$0.00	Printing, Postage & Distribution .	\$0.00
Individuals ....	\$0.00	Individuals .....	\$0.00	Newspaper Advertisements .....	\$0.00
Out-of-State ...	\$0.00	Out-of-State ....	\$0.00	Radio & Television Advertising ...	\$0.00
PACs .....	\$0.00	PACs .....	\$0.00	Yard Signs & Bumper Stickers .....	\$0.00
Party .....	\$0.00	Party .....	\$0.00	Consultant Services .....	\$0.00
Candidate/Spouse	\$0.00	Candidate/Spouse	\$0.00	Reimbursement to Candidate .....	\$0.00
Unitemized .....	\$0.00	Unitemized .....	\$0.00	Fundraiser .....	\$0.00
=====		=====		Miscellaneous .....	\$0.00
				=====	
TOTAL CASH ..	\$0.00	TOTAL IN-KINDS ...	\$0.00	TOTAL EXPENDITURES .....	\$0.00
=====		=====		=====	



Candidate: Poovey, Kirt

Party: Tax Primary Election: N/A General Election: Lost

Current Office: N/A

Office Sought: Governor

MONETARY CONTRIBUTIONS		IN-KIND CONTRIBUTIONS		EXPENDITURES	
Businesses .....	\$100.00	Businesses .....	\$0.00	Printing, Postage & Distribution .	\$399.00
Individuals ....	\$2,319.00	Individuals .....	\$600.00	Newspaper Advertisements .....	\$0.00
Out-of-State ...	\$0.00	Out-of-State ....	\$0.00	Radio & Television Advertising ...	\$983.00
PACs .....	\$100.00	PACs .....	\$0.00	Yard Signs & Bumper Stickers .....	\$737.00
Party .....	\$0.00	Party .....	\$0.00	Consultant Services .....	\$0.00
Candidate/Spouse	\$0.00	Candidate/Spouse	\$1,500.00	Reimbursement to Candidate .....	\$0.00
Unitemized .....	\$28.80	Unitemized .....	\$0.00	Fundraiser .....	\$0.00
=====		=====		Miscellaneous .....	\$429.00
				=====	
TOTAL CASH ..	\$2,547.80	TOTAL IN-KINDS ...	\$2,100.00	TOTAL EXPENDITURES .....	\$2,548.00
=====		=====		=====	

Candidate: King, Darrel

Party: Rfm Primary Election: N/A General Election: Lost

Current Office: N/A

Office Sought: Governor

MONETARY CONTRIBUTIONS		IN-KIND CONTRIBUTIONS		EXPENDITURES	
Businesses .....	\$0.00	Businesses .....	\$0.00	Printing, Postage & Distribution .	\$482.00
Individuals ....	\$7,820.00	Individuals .....	\$0.00	Newspaper Advertisements .....	\$0.00
Out-of-State ...	\$0.00	Out-of-State ....	\$0.00	Radio & Television Advertising ...	\$5,697.00
PACs .....	\$0.00	PACs .....	\$0.00	Yard Signs & Bumper Stickers .....	\$0.00
Party .....	\$100.00	Party .....	\$0.00	Consultant Services .....	\$0.00
Candidate/Spouse	\$0.00	Candidate/Spouse	\$990.93	Reimbursement to Candidate .....	\$700.00
Unitemized .....	\$8.83	Unitemized .....	\$0.00	Fundraiser .....	\$0.00
=====		=====		Miscellaneous .....	\$1,050.00
				=====	
TOTAL CASH ..	\$7,928.83	TOTAL IN-KINDS ...	\$990.93	TOTAL EXPENDITURES .....	\$7,929.00
=====		=====		=====	

Candidate: **Stovall, Carla**

Party: **Rep** Primary Election: **Won** General Election: **Won**

Current Office: Attorney General

Office Sought: **Attorney General**

MONETARY CONTRIBUTIONS

IN-KIND CONTRIBUTIONS

EXPENDITURES

Businesses .....	\$52,315.00	Businesses .....	\$6,888.59	Printing, Postage & Distribution .	\$52,848.00
Individuals ....	\$253,388.19	Individuals .....	\$10,046.23	Newspaper Advertisements .....	\$5,718.00
Out-of-State ...	\$31,550.00	Out-of-State ....	\$700.26	Radio & Television Advertising ...	\$58,505.00
PACs .....	\$28,050.00	PACs .....	\$0.00	Yard Signs & Bumper Stickers .....	\$81,186.00
Party .....	\$675.00	Party .....	\$2,669.33	Consultant Services .....	\$0.00
Candidate/Spouse	\$0.00	Candidate/Spouse	\$0.00	Reimbursement to Candidate .....	\$20,332.00
Unitemized .....	\$14,830.01	Unitemized .....	\$0.00	Fundraiser .....	\$28,801.00
=====		=====		Miscellaneous .....	\$110,497.00
				=====	
TOTAL CASH ..	\$380,808.20	TOTAL IN-KINDS ...	\$20,304.41	TOTAL EXPENDITURES .....	\$357,887.00
=====		=====		=====	

Candidate: **Lykins, Dan**

Party: **Demo** Primary Election: **Won** General Election: **Lost**

Current Office: N/A

Office Sought: **Attorney General**

MONETARY CONTRIBUTIONS

IN-KIND CONTRIBUTIONS

EXPENDITURES

Businesses .....	\$2,000.00	Businesses .....	\$0.00	Printing, Postage & Distribution .	\$3,169.00
Individuals ....	\$18,325.00	Individuals .....	\$1,063.30	Newspaper Advertisements .....	\$12,381.00
Out-of-State ...	\$10,550.00	Out-of-State ....	\$0.00	Radio & Television Advertising ...	\$27,052.00
PACs .....	\$5,700.00	PACs .....	\$0.00	Yard Signs & Bumper Stickers .....	\$6,451.00
Party .....	\$10,350.00	Party .....	\$1,162.00	Consultant Services .....	\$0.00
Candidate/Spouse	\$2,000.00	Candidate/Spouse	\$214.20	Reimbursement to Candidate .....	\$0.00
Unitemized .....	\$1,529.88	Unitemized .....	\$35.88	Fundraiser .....	\$0.00
=====		=====		Miscellaneous .....	\$902.00
				=====	
TOTAL CASH ..	\$50,454.88	TOTAL IN-KINDS ...	\$2,475.38	TOTAL EXPENDITURES .....	\$49,955.00
=====		=====		=====	



Candidate: **Boehr, Sandra**

Party: **Tax** Primary Election: **N/A** General Election: **Lost**

Current Office: **N/A**

Office Sought: **Secretary of State**

**MONETARY CONTRIBUTIONS**

**IN-KIND CONTRIBUTIONS**

**EXPENDITURES**

Businesses .....	\$0.00	Businesses .....	\$0.00	Printing, Postage & Distribution .	\$0.00
Individuals ....	\$0.00	Individuals ....	\$0.00	Newspaper Advertisements .....	\$0.00
Out-of-State ...	\$0.00	Out-of-State ....	\$0.00	Radio & Television Advertising ...	\$0.00
PACs .....	\$0.00	PACs .....	\$0.00	Yard Signs & Bumper Stickers .....	\$0.00
Party .....	\$0.00	Party .....	\$0.00	Consultant Services .....	\$0.00
Candidate/Spouse	\$0.00	Candidate/Spouse	\$0.00	Reimbursement to Candidate .....	\$0.00
Unitemized .....	\$0.00	Unitemized .....	\$0.00	Fundraiser .....	\$0.00
=====		=====		Miscellaneous .....	\$0.00
				=====	
TOTAL CASH ..	\$0.00	TOTAL IN-KINDS ...	\$0.00	TOTAL EXPENDITURES .....	\$0.00
=====		=====		=====	

Candidate: **Shallenburger, Tim**

Party: **Rep** Primary Election: **Won** General Election: **Won**

Current Office: **Representative**

Office Sought: **State Treasurer**

**MONETARY CONTRIBUTIONS**

**IN-KIND CONTRIBUTIONS**

**EXPENDITURES**

Businesses .....	\$59,985.00	Businesses .....	\$13,723.90	Printing, Postage & Distribution .	\$28,502.00
Individuals ....	\$73,825.00	Individuals ....	\$12,374.73	Newspaper Advertisements .....	\$873.00
Out-of-State ...	\$20,600.00	Out-of-State ....	\$0.00	Radio & Television Advertising ...	\$52,244.00
PACs .....	\$37,735.00	PACs .....	\$0.00	Yard Signs & Bumper Stickers .....	\$21,999.00
Party .....	\$700.00	Party .....	\$477.64	Consultant Services .....	\$0.00
Candidate/Spouse	\$0.00	Candidate/Spouse	\$0.00	Reimbursement to Candidate .....	\$3,205.00
Unitemized .....	\$5,003.07	Unitemized .....	\$0.00	Fundraiser .....	\$16,135.00
=====		=====		Miscellaneous .....	\$87,369.00
				=====	
TOTAL CASH ..	\$197,848.07	TOTAL IN-KINDS ...	\$26,576.27	TOTAL EXPENDITURES .....	\$210,327.00
=====		=====		=====	



Candidate: Cline, Rita

Party: Demo Primary Election: Won General Election: Lost

Current Office: N/A

Office Sought: State Treasurer

MONETARY CONTRIBUTIONS

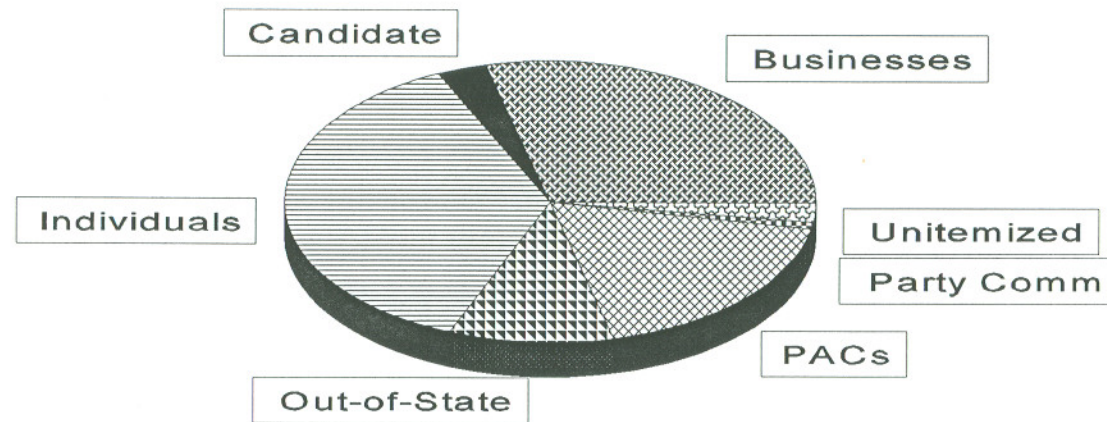
IN-KIND CONTRIBUTIONS

EXPENDITURES

Businesses .....	\$2,000.00	Businesses .....	\$0.00	Printing, Postage & Distribution .	\$3,147.00
Individuals ....	\$5,835.00	Individuals .....	\$232.56	Newspaper Advertisements .....	\$4,817.00
Out-of-State ...	\$0.00	Out-of-State ....	\$0.00	Radio & Television Advertising ...	\$5,534.00
PACs .....	\$350.00	PACs .....	\$0.00	Yard Signs & Bumper Stickers .....	\$1,211.00
Party .....	\$1,450.00	Party .....	\$0.00	Consultant Services .....	\$0.00
Candidate/Spouse	\$6,350.00	Candidate/Spouse	\$0.00	Reimbursement to Candidate .....	\$0.00
Unitemized .....	\$295.83	Unitemized .....	\$0.00	Fundraiser .....	\$0.00
=====		=====		Miscellaneous .....	\$1,547.00
				=====	
TOTAL CASH ..	\$16,280.83	TOTAL IN-KINDS ...	\$232.56	TOTAL EXPENDITURES .....	\$16,256.00
=====		=====		=====	

# CANDIDATES FOR STATE TREASURER

## MONETARY CONTRIBUTIONS





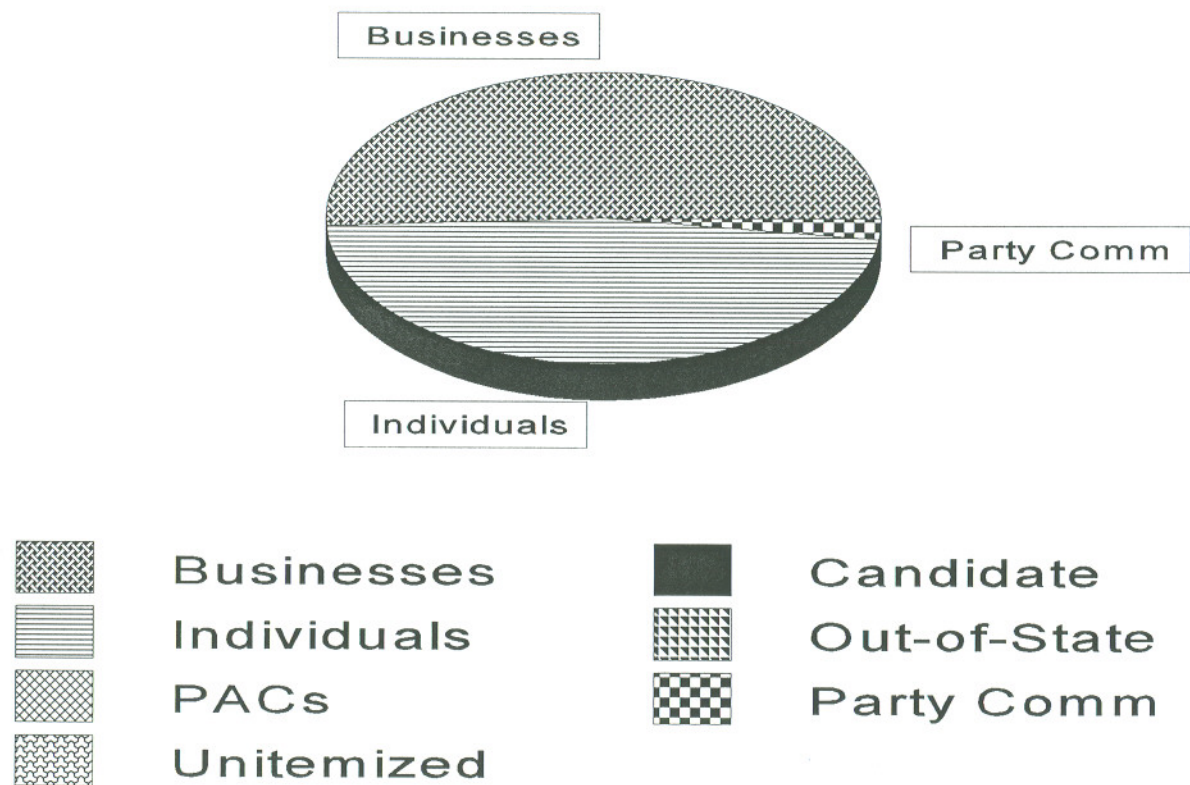
## 1998 ELECTION CYCLE MONETARY CONTRIBUTIONS TO STATE TREASURER CANDIDATES

TYPE OF CONTRIBUTOR	CANDIDATE								
	Total Amount	% of Total Contributions	Incumbent	Non-Incumbent	Democrat Incumbent	Democrat Non-Incumbent	Republican Incumbent	Republican Non-Incumbent	Non-Incumbent Libertarian & Independent
Businesses, Corporations, Unions	\$61,985.00	29%	N/A	\$61,985.00	N/A	\$200.00	N/A	\$59,985.00	N/A
Candidates/Spouse's Personal Funds	\$6,350.00	3%	N/A	\$6,350.00	N/A	\$6,350.00	N/A	\$0.00	N/A
Individuals	\$79,660.00	37%	N/A	\$79,660.00	N/A	\$5,835.00	N/A	\$73,825.00	N/A
Out-of-State Organizations	\$20,600.00	10%	N/A	\$20,600.00	N/A	\$0.00	N/A	\$20,600.00	N/A
Political Action Committees	\$38,085.00	18%	N/A	\$38,085.00	N/A	\$350.00	N/A	\$37,735.00	N/A
Party Committees	\$2,150.00	1%	N/A	\$2,150.00	N/A	\$1,450.00	N/A	\$700.00	N/A
Unitemized & Miscellaneous	\$5,298.90	2%	N/A	\$5,298.90	N/A	\$295.83	N/A	\$5,003.07	N/A
<b>Total Contributions</b>	<b>\$214,128.90</b>	<b>100%</b>	<b>N/A</b>	<b>\$214,128.90</b>	<b>N/A</b>	<b>\$16,280.83</b>	<b>N/A</b>	<b>\$197,848.07</b>	<b>N/A</b>

Number of Candidates	Won	1			1		0		1
	Lost	1			1		1		0
	Total	2			2		1		1

## CANDIDATES FOR STATE TREASURER IN-KIND CONTRIBUTIONS



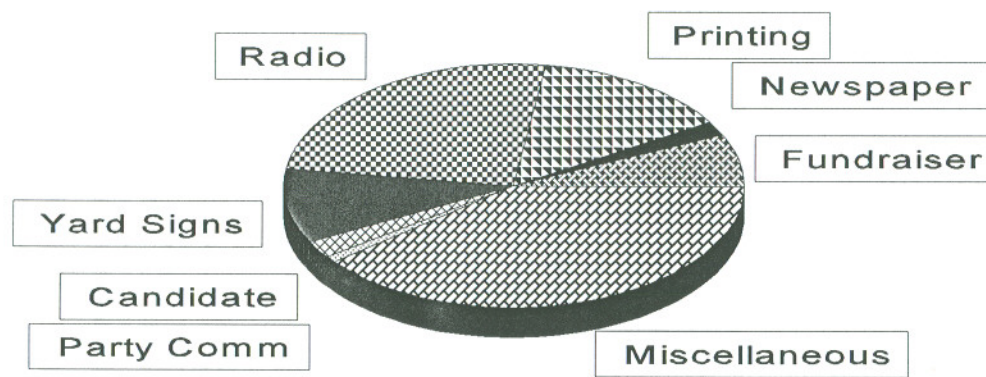


## 1998 ELECTION CYCLE IN-KIND CONTRIBUTIONS TO STATE TREASURER CANDIDATES

TYPE OF CONTRIBUTOR	CANDIDATE								
	Total Amount	% of Total Contributions	Incumbent	Non-Incumbent	Democrat Incumbent	Democrat Non-Incumbent	Republican Incumbent	Republican Non-Incumbent	Non-Incumbent Libertarian & Independent
Businesses, Corporations, Unions	\$13,723.90	51%	N/A	\$13,723.90	N/A	\$0.00	N/A	\$13,723.90	N/A
Candidates/Spouse's Personal Funds	\$0.00	0%	N/A	\$0.00	N/A	\$0.00	N/A	\$0.00	N/A
Individuals	\$12,607.29	47%	N/A	\$12,607.29	N/A	\$232.56	N/A	\$12,374.73	N/A
Out-of-State Organizations	\$0.00	0%	N/A	\$0.00	N/A	\$0.00	N/A	\$0.00	N/A
Political Action Committees	\$0.00	0%	N/A	\$0.00	N/A	\$0.00	N/A	\$0.00	N/A
Party Committees	\$477.64	2%	N/A	\$477.64	N/A	\$0.00	N/A	\$447.64	N/A
Unitemized & Miscellaneous	\$0.00	0%	N/A	\$0.00	N/A	\$0.00	N/A	\$0.00	N/A
<b>Total Contributions</b>	<b>\$26,808.83</b>	<b>100%</b>	<b>N/A</b>	<b>\$26,808.83</b>	<b>N/A</b>	<b>\$232.56</b>	<b>N/A</b>	<b>\$26,576.27</b>	<b>N/A</b>

Number of Candidates	Won	1			1		0		1	
	Lost	1			1		1		0	
	Total	2			2		1		1	

## CANDIDATES FOR STATE TREASURER EXPENDITURES



	Consultant
	Newspaper
	Radio
	Candidate
	Miscellaneous

	Fundraiser
	Printing
	Yard Signs
	Party Comm



## 1998 ELECTION CYCLE EXPENDITURES FOR STATE TREASURER CANDIDATES

TYPE OF EXPENDITURE	CANDIDATE								
	Total Amount	% of Total Expenditures	Incumbent	Non-Incumbent	Democrat Incumbent	Democrat Non-Incumbent	Republican Incumbent	Republican Non-Incumbent	Non-Incumbent Libertarian & Independent
Consultant	\$0.00	0%	N/A	\$0.00	N/A	\$0.00	N/A	\$0.00	N/A
Fundraiser	\$16,135.00	7%	N/A	\$16,135.00	N/A	\$0.00	N/A	\$16,135.00	N/A
Newspaper Advertising	\$5,690.00	2%	N/A	\$5,690.00	N/A	\$4,817.00	N/A	\$873.00	N/A
Printing, Postage and Distribution	\$31,649.00	14%	N/A	\$31,649.00	N/A	\$3,147.00	N/A	\$28,502.00	N/A
Radio and Television Advertising	\$57,778.00	25%	N/A	\$57,778.00	N/A	\$5,534.00	N/A	\$52,244.00	N/A
Yard Signs, Bumper Stickers, etc	\$23,210.00	10%	N/A	\$23,210.00	N/A	\$1,211.00	N/A	\$21,999.00	N/A
Reimbursement to Candidate	\$3,205.00	2%	N/A	\$3,205.00	N/A	\$0.00	N/A	\$3,205.00	N/A
Party	\$791.00	1%	N/A	\$791.00	N/A	\$0.00	N/A	\$791.00	N/A
Miscellaneous	\$88,916.00	39%	N/A	\$88,916.00	N/A	\$1,547.00	N/A	\$87,369.00	N/A
<b>Total Expenditures</b>	<b>\$227,374.00</b>	<b>100%</b>	<b>N/A</b>	<b>\$227,374.00</b>	<b>N/A</b>	<b>\$16,256.00</b>	<b>N/A</b>	<b>\$211,118.00</b>	<b>N/A</b>

Number of Candidates	Won								
	Lost	1		1		0		1	
	Total	1		1		1		0	
		2		2		1		1	

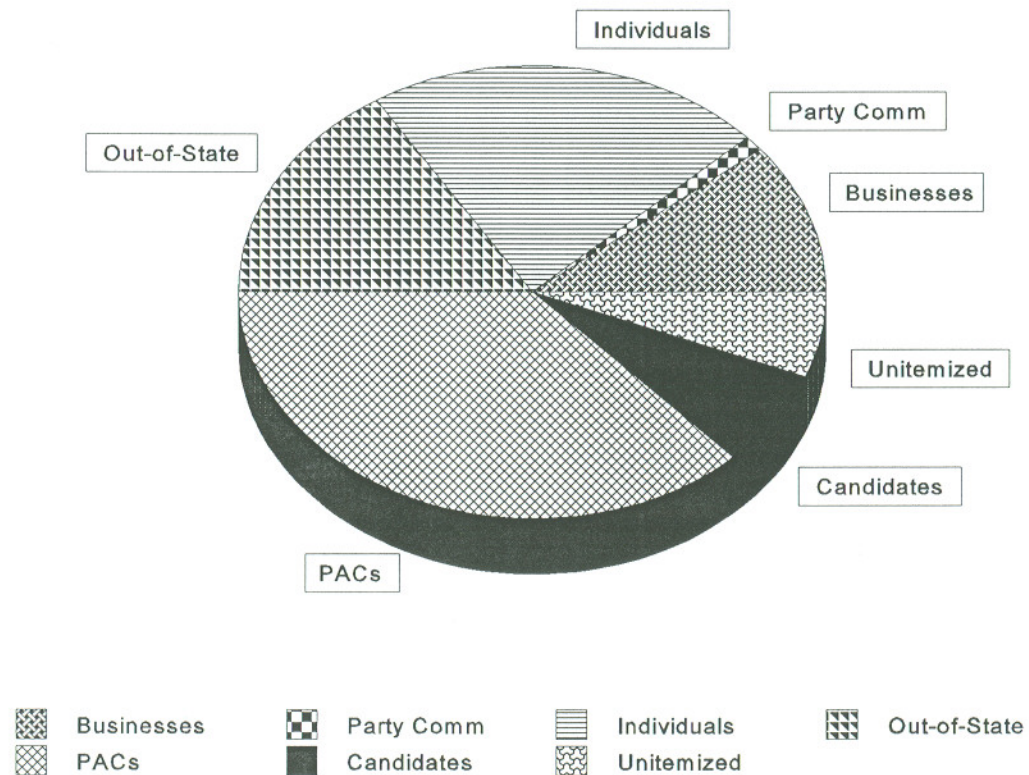
## TEN YEAR COMPARISON OF MONETARY CONTRIBUTIONS REPORTED BY CANDIDATES FOR STATEWIDE OFFICES BY TYPE OF CONTRIBUTOR

TYPE OF CONTRIBUTOR					
	1982	1986	1990	1994	1998
Businesses, Corporations, Unions	\$567,642.00	\$972,071.00	\$1,379,281.00	\$1,275,023.00	\$770,191.77
Candidates/Spouse's Personal Funds	\$636,975.00	\$1,866,369.00	\$663,104.00	\$1,984,859.00	\$42,102.59
Individuals	\$2,430,076.00	\$3,837,316.00	\$3,800,245.00	\$5,204,231.00	\$3,302,846.90
Out-of-State Organizations	\$168,857.00	\$324,477.00	\$759,177.00	\$564,144.00	\$334,860.00
Political Action Committees	\$166,784.00	\$266,680.00	\$275,566.00	\$343,980.00	\$303,230.48
Party Committees	\$127,982.00	\$82,145.00	\$97,906.00	\$93,334.00	\$176,000.00
Unitemized & Miscellaneous	\$275,803.00	\$261,713.00	\$297,593.00	\$281,043.00	\$146,177.56
<b>Total Contributions</b>	\$4,374,119.00	\$7,610,771.00	\$7,272,872.00	\$9,746,614.00	\$5,075,409.30



# MONETARY CONTRIBUTIONS BY CATEGORY

## 1998 HOUSE ELECTION CYCLE



# 1998 ELECTION CYCLE MONETARY CONTRIBUTIONS TO HOUSE CANDIDATES

TYPE OF CONTRIBUTOR	CANDIDATE								
	Total Amount	% of Total Contributions	Incumbent	Non-Incumbent	Democrat Incumbent	Democrat Non-Incumbent	Republican Incumbent	Republican Non-Incumbent	Non-Incumbent Libertarian & Independent
Businesses, Corporations, Unions	\$338,479.66	11%	\$201,049.85	\$137,429.81	\$61,263.85	\$38,188.03	\$139,786.00	\$99,241.78	0
Candidates/Spouse's Personal Funds	\$200,359.56	7%	\$28,085.11	\$172,274.45	\$6,012.38	\$54,342.60	\$22,072.73	\$117,568.75	\$363.10
Individuals	\$671,800.84	22%	\$377,869.16	\$293,931.68	\$93,842.98	\$124,551.17	\$284,026.18	\$168,705.51	\$675.00
Out-of-State Organizations	\$476,847.00	16%	\$400,757.00	\$76,090.00	\$130,025.00	\$38,015.00	\$270,732.00	\$38,075.00	0
Political Action Committees	\$1,127,338.76	37%	\$889,365.00	\$237,973.76	\$321,175.00	\$106,495.00	\$568,190.00	\$131,478.76	0
Party Committees	\$47,611.61	1%	\$10,070.08	\$37,541.53	\$7,260.08	\$30,140.00	\$2,810.00	\$7,401.53	0
Unitemized & Miscellaneous	\$173,962.96	6%	\$81,325.94	\$92,637.02	\$34,593.91	\$53,886.19	\$46,732.03	\$38,239.80	\$511.03
<b>Total Contributions</b>	<b>\$3,036,400.39</b>	<b>100%</b>	<b>\$1,988,522.14</b>	<b>\$1,047,878.25</b>	<b>\$654,173.20</b>	<b>\$445,617.99</b>	<b>\$1,334,348.94</b>	<b>\$600,711.13</b>	<b>\$1,549.13</b>

<b>Number of Candidates</b>	<b>Won</b>								
	<b>Lost</b>	125		111	14	43	5	68	9
	<b>Total</b>	106		3	103	1	47	2	48
		231		114	117	44	52	70	57
									8

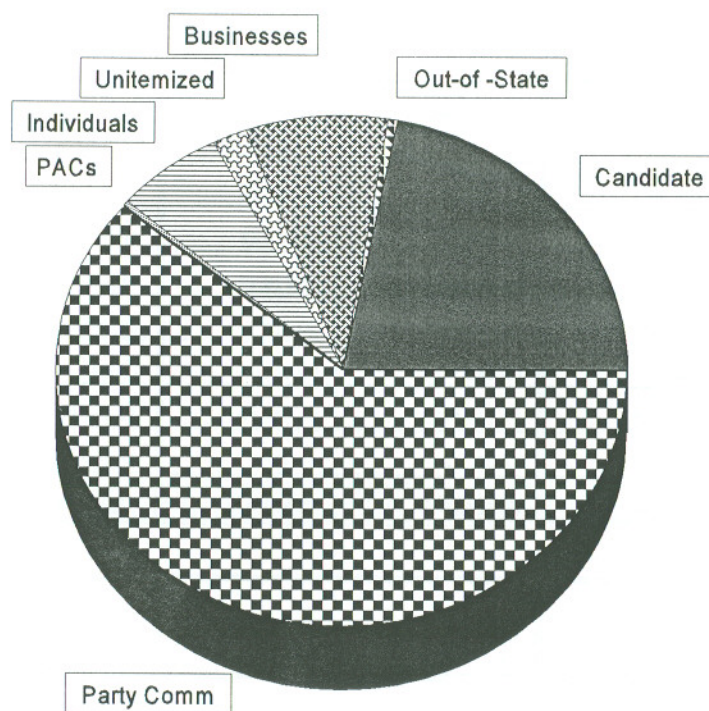


199

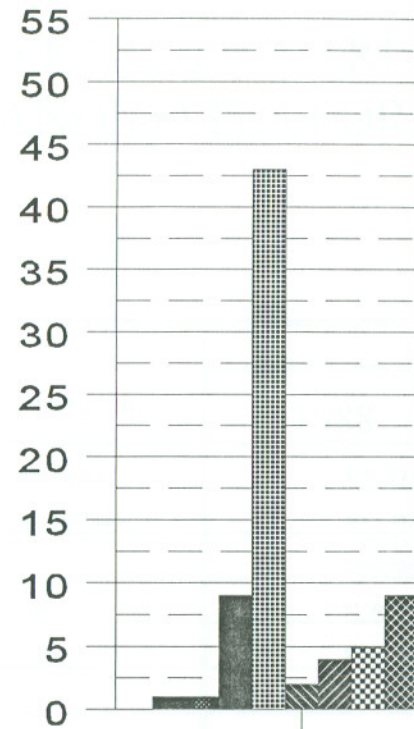
## IN-KIND CONTRIBUTIONS BY CATEGORY 1998 HOUSE ELECTION CYCLE

TYPE OF
Businesses, Corpor
Candidates/Spouse
Individuals
Out-of-State Orgar
Political Action Co
Party Committees
Unitemized & Mis
Total C

Number of Cand
----------------



Percent



D-Incumbent



# EXPENDITURES BY CATEGORY

## 1998 HOUSE ELECTION CYCLE

